



[www.benefits.com](http://www.benefits.com)



[info@benefits.com](mailto:info@benefits.com)



Via Augusto Androsi 13  
20135 - Milano - Italy



THE BEST SOLUTION FOR COMFORT



Via Augusto Anfossi, 13 - 20135 Milano-MI, Italy.  
[info@benelifts.com](mailto:info@benelifts.com)  
[www.benelifts.com](http://www.benelifts.com)

# BENELIFTS PRODUCTS



## SUSTAINS YOUR FUTURE IN TOTAL SAFETY. IMPECCABLE RELIABILITY WITH GREAT PERFORMANCE

From Benelifts' 20 years' experience, always oriented towards innovation serving the ever-evolving human needs, here comes the Homelift: a quintessential design that meets the modern demands of residential construction nowadays - ensuring full reliability, reducing consumption and aiming at greater environmental sustainability through the use of renewable energy sources.

Benelifts' product is user-friendly and definitive solution for architectural barriers in existing constructions, thanks to their safety features, flexibility ensuring the minimum encumbrance with low energy consumption. Our products consistently comply with the latest international standards certified by reputable organizations in the field.



## BEAUTY & TECHNOLOGY ALL TOGETHER

The harmonic blending of cutting-edge technology and opulent European aesthetics is perfectly exemplified by Benelifts Products, given with diverse design and space-saving options.

This innovative design incorporates advanced energy-saving features, allowing the system to operate efficiently without compromising on safety standards. By optimizing power usage, it not only meets the stringent EN81-41 standard but also reduces environmental impact and operating costs.



BENELIFTS S.R.L.



# HOMELIFTS



# BENELIFTS HOME LIFTS

AN ALL INCLUSIVE FEATURE OF OUR PRODUCTS, SINCE SAFETY IS NOT AN OPTION



## MINIMAL ENERGY CONSUMPTION

Our homelifts platform uses the existing electrical system of your building and consumes up to 0.5kW in motion (for rated speed of 0.3m/s - NON EC - rated power of 0.9kW)  
With system integrated batteries, it consumes up to 0.2kW in motion. Currently available with a rated speed feature of 0.15m/s



## ADAPTABILITY AND FLEXIBILITY

Our homelifts platform uses the existing electrical system of your building and consumes up to 0.5kW in motion (for rated speed of 0.3m/s - NON EC - rated power of 0.9kW)



## INSTALLATION EASE

Benelifts Homelift is distinguished for its suppleness, quietness, and safety. It has features that promote user safety and comfort with the combination of premium components.  
The lifts come with a full set of standard safety features, including a UPS and an emergency light in the event of a power outage.

# ELUX TUBO



# YOUR SMART LIFT SOLUTION



#### Smart Civil Work

This lift is an ideal solution to be installed on the exterior face of the building, in the lobby, or at any place where it can enhance the elevation and the 'look&feel' of the building. We introduce you to an electrical home elevator that requires no supporting wall, pit, or hydraulics vacuum systems. Just plug it into your domestic electrical socket and start moving up & down!



#### Minimal Maintenance

This is an electrical self-supporting elevator. No use of oil, vacuum systems, or counterweights. This means less maintenance and saves a lot of additional costs and time during the installation-process.



#### Plug & Play

This elevator comes as a semi-assembled unit. Just install, plug & play. No surprises!



#### Self Supported Structure

**Benelifts Elux Tubo** is a stand-alone elevators that does not require any supporting beam, column or walls. All you need is the space!



#### Panoramic View

The unique glassy sightseeing capsule enables the passengers to have eye contact with the surrounding area, even when the lift is in motion.



#### Green Elevator

This elevator is made of eco-friendly raw materials that are harmless when damaged. It requires the least amount of assembly and maintenance resources and consumes less energy when in use compared to the other traditional elevators.



#### Noise

When using **Benelifts Elux Tubo**, you can count on a smooth moving system with no commotion and minimum level of noise.



# General Specifications



SHaft HEIGHT	1100 MM	1200 mm	1300 mm	1700 mm
PIT	120 mm	120 mm	120 mm	120 mm
SHaft DIA	3100MM	3100 mm	3100 mm	3100 mm
TRAVEL (MAX)	30 MT	28 MT	33 MT	28 MT
CAPACITY	300 KG	300 KG	400 KG	300 KG
STAIRS LOAD	300 KG	400 KG	700 KG	600 KG
DRIVE TYPE	PMc MM (PMc)	PMc MM (PMc)	PMc MM (PMc)	PMc MM (PMc)
SPEED	0.75 M/S	0.75 M/S	0.75 M/S	0.75 M/S
POWER SUPPLY	220V OR 380V, 50 Hz	220V OR 380V, 50 Hz	220V OR 380V, 50 Hz	220V OR 380V, 50 Hz
MOOTOR KW	0.75 KW - 3 Phase	0.75 KW - 3 Phase	0.75 KW - 3 Phase	0.75 KW - 3 Phase

## Single Entrance

PRODUCT CODE	CVL-SEN-100	CVL-SEN-120	CVL-SEN-130	CVL-SEN-170
CABINET DIAMETER	800 MM	1000 MM	1200 MM	1400 MM
CABINET HEIGHT	2120 MM	2120 MM	2100 MM	2120 MM
SWING DOOR SIZE	600 X 2100 MM	600 X 2100 MM	700 X 2100 MM	900 X 2100 MM
SLIT DOOR SIZE	800 X 2100 MM	800 X 2100 MM	900 X 2100 MM	1100 X 2100 MM

## Opposite Entrance

PRODUCT CODE	CVL-OPP-100	CVL-OPP-120	CVL-OPP-130	CVL-OPP-170
CABINET DIAMETER	800 MM	1000 MM	1200 MM	1400 MM
CABINET HEIGHT	2120 MM	2120 MM	2100 MM	2120 MM
SWING DOOR SIZE	600 X 2100 MM	600 X 2100 MM	700 X 2100 MM	900 X 2100 MM
SLIT DOOR SIZE	800 X 2100 MM	800 X 2100 MM	900 X 2100 MM	1100 X 2100 MM

## Three Way Entrance

PRODUCT CODE	-	CVL-TW-120	CVL-TW-130	CVL-TW-170
CABINET DIAMETER	-	1000 MM	1200 MM	1400 MM
CABINET HEIGHT	-	2120 MM	2100 MM	2120 MM
SWING DOOR SIZE	-	600 X 2100 MM	700 X 2100 MM	900 X 2100 MM
SLIT DOOR SIZE	-	800 X 2100 MM	900 X 2100 MM	1100 X 2100 MM



# Technical Specification

## General

- Maximum Travel : 14 MT
- Maximum Levels : 5 Stops / 17.1 MT
- Pit Depth : 120 mm - No pit with optional short ramp
- Installation Place : Inside - Outside
- Drive Train : Winding Drum Machine with Encoder (Made in Italy)
- Machine Control : Preprogrammed variable frequency drive (Made in Turkey)
- Rope : 8 mm standard; Turkish quality, on request: German quality
- Transmission : Ultra-low vibration, 3-stage, right-angle, helical-bevel drive
- Noise Level : 5kdb ventilator OFF - 5kdb with ventilator ON

## Internal Specifications

- Cabin CLADDING : CLEAR SOLID Polycarbonate (250 times stronger than glass)
- Cabin Ceiling : LED Spot Light - Spot Light
- Cabin Operating Panel : Intercom - Alarm - Emergency Stop Button (COP-top is GENEMEK brand made in Turkey)
- Overload Indication : Built in on COP
- Cabin Flooring : PVC - Wood
- Cop : Intercom - alarm - fan - emergency stop button (COP-LDP made in Turkey)
- Cabinet Ceiling : Etched steel or wood with spot light

## External Specifications

- Shaft Construction : Profil
- Structure Cladding Glass : Solid Polycarbonate 4 mm (Made in Germany)
- Landing Door Height : 2100 mm
- Door Cladding : Solid Polycarbonate 4 mm (Made in Germany)
- Door Type : Swing manual door and swing semi-automatic choice
- Door interlocks : Italian brand - (Made in Italy)

# Multiple Door Access

The door access for this elevator can be customized according to the situation in the building.

The flexible design of this elevator allows us to install the entrance or the exits from different sides on each floor.

This adjustability can be very handy within buildings that have been originally built without elevators.



BENELIFTS S.R.L



## Customization



### Adaptability

The technological simplicity of this product makes this lift an extremely adaptable elevator and helps you to make full usage of the space and elevation of your property. This lift can be installed without any additional reinforcement or structural changes in the building. That makes the elevator tremendously friendly for new or even vintage homes.



### Flexibility

We strived to ensure full flexibility of this lift making sure that a G+1 elevator can be converted into a G+2 or a G+3 elevator in the future. If needed, the whole elevator can be completely dismantled and relocated to a new place in or out of the building or even to a new property.



### Return to Home

The technology of this lift allows stationing the lift on any floor of your desire. Thanks to the installed timed electronic system, you can easily choose where your lift should land when not in use.

## Color Options

### Standard

Our ESP painting method reflects itself in a shiny surface, flexible & durable coating which is less liable to chip or peel. All used materials are appropriate for inside or outside use with no VOC content.



Ral 9001  
Cream



Ral 1004  
Golden Yellow



Ral 5002  
Ultramarine Blue



Ral 9004  
Signal Black



Ral 9003  
Signal White



Ral 8012  
Red Brown



Ral 9007  
Grey Aluminium



Ral 8003  
Clay Brown



### Stainless Steel

Alternatively we offer stainless steel covers in variant colors and cravings.



Gold Steel



Black Steel



Stainless



Rose Steel



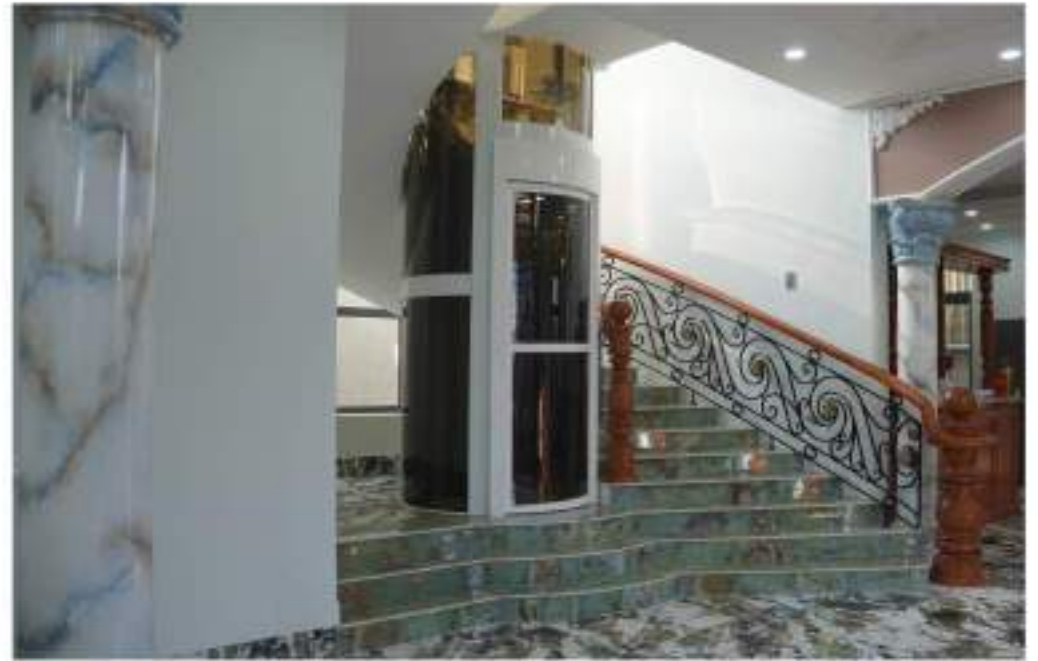
# ELUX TRELLO

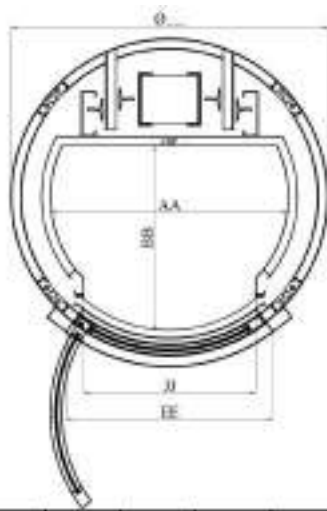




**BENEFITS**® | TRELLO A01  
THE BEST TEAM

**BENEFITS S.R.L.**



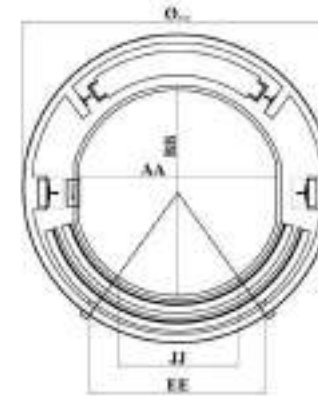


# ELUX TRELLO

## General Specifications

RECOMMENDED PIT DIMENSIONS: 1500MM

RECOMMENDED OH DIMENSIONS: 4500MM



Ø	1200	1250	1300	1350	1400	1450	1500
AA	900	950	1000	1050	1100	1150	1200
BB	700	750	800	850	900	950	1000
JJ	650	700	750	800	850		
EE	780	830	880	930	980		
P	250 - 300		300 - 400				

Ø..	1500	1600	1700	1800	1900	2000	2100	2200	2300	2400	2500	
AA	950	1000	1050	1150	1250	1350	1450	1550	1650	1750	1850	
BB	950	1000	1100	1200	1300	1400	1500	1600	1700	1800	1900	
JJ	650	650	700	700	750	800	850	800	850	900	900	
EE	950		1025	1025	1100	1175	1250	1175	1250	1325	1325	
P	320		450		500		550-600		650-700		800 - 1000	



# ELUX TRELLO

## Specifications

### GENERAL

Rated load (min-max): 320kg-1000kg

Speed: 0.6m/s-0.9m/s

Power supply: Main power supply: 3 phases 380V

Light power supply: 1 phase 220V

Maximum travel: 20m

Maximum stop: 5 stops

Recommended Pit: 1500mm

Recommended OH: 3800-4500mm

Type of installation: Indoor

Machine: Sicor (Italy)

Controller: Arkel (Turkey)

Rope: Rope Ø8mm - Rope Ø10mm

### CAR

Car wall: Tempered glass (thickness: 10mm) + Brushed/ Mirror stainless steel (thickness: 1mm)

Car ceiling: Stainless steel or Panoramic glass

Led spotlights which will automatically turn off after 5 minutes if the elevator is not in operation.

Handrail: Wrap around car diameter

Car floor: Granite

Car door: Tempered glass (thickness: 10-12mm) + Stainless steel

COP: Floor button, Intercom, Alarm

### STEEL SHAFT

Shaft structure material: Powder coated steel

Shaft wall: Tempered glass (thickness: 8mm – 10mm)

Landing door: Tempered glass (thickness: 10-12mm) + Stainless steel

### SAFETY FACTORS

- Protection against antiphase, phase loss, overload, overspeed.
- UPS
- Photocell
- Governor



# ELUX BELLO









**BENEFITS**® | BELLO M02  
MADE WITH TEAM

BENEFITS S.R.L.

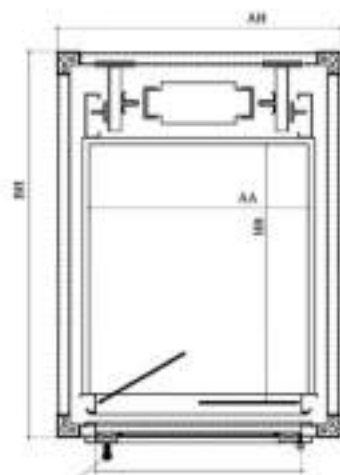




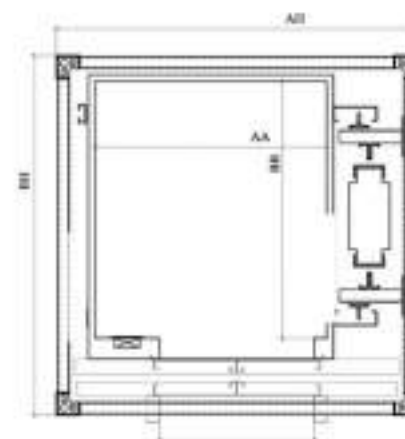
**BENELIFTS** | BELLO A01



BENELIFTS S.R.L.



AH	850	900	950	1000	1050	1100	1150	1200	1250	1300	1350
AA	600	650	700	750	800	850	900	950	1000	1050	1100
BH	1300	1350	1400	1450	1500	1550	1600	1650	1700	1750	
BB	800	850	900	950	1000	1050	1100	1150	1200	1250	

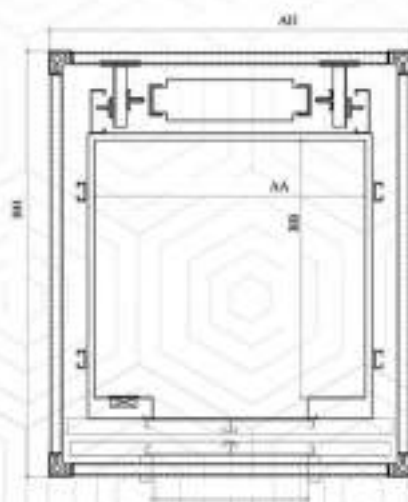


AH	1400	1450	1500	1550	1600	1650	1700	1750				
AA	900	950	1000	1050	1100	1150	1200	1250	1250	1250	1250	
BH	1050	1100	1150	1200	1250	1300	1350	1400	1450	1500	1550	1600
BB	650	700	750	800	850	900	950	1000	1050	1100	1150	1200

RECOMMENDED PIT DIMENSIONS: 300MM

## General Specifications

RECOMMENDED OH DIMENSIONS: 3800MM



AH	1400	1450	1500	1550							
AA	1050	1100	1150	1200	1200	1200	1200	1200	1200	1200	1200
BH	1400	1450	1500	1550	1600	1650	1700	1750	1800	1800	
BB	750	800	850	900	950	1000	1050	1100	1150	1200	



AH	1250	1300	1350	1400	1450	1500	1550	1600	1650	1700	1750
AA	750	800	850	900	950	1000	1050	1100	1150	1200	1250
BH	1250	1300	1350	1400	1450	1500	1550	1600	1650	1700	1750
BB	750	800	850	900	950	1000	1050	1100	1150	1200	1250

BENEFITS S.R.L

# ELUX BELLO

## Specifications

### SQUARE HOMELIFT WITH STEEL SHAFT

#### GENERAL

Rated load (min-max): 250kg – 450kg  
Speed: 0.3m/s – 0.45m/s  
Power supply: 1 phase 220V or 3 phases 380V  
Maximum travel: 20m  
Maximum stop: 5 stops  
Recommended Pit: 300mm  
Recommended OH: 3800mm  
Type of installation: Indoor/Outdoor  
Machine: Sicor (Italy)  
Controller: Arkel (Turkey)  
Rope: Rope Ø6.5mm - Rope Ø8mm

#### CAR

Car wall: Tempered glass (thickness: 10mm) + Brushed/ Mirror stainless steel (Car wall Tempered glass (thickness: 10mm) + Brushed/ Mirror stainless steel (thickness: 1mm)  
Car ceiling: Mirror stainless steel (thickness: 1mm)  
Led spotlights which will automatically turn off after 5 minutes if the elevator is not in operation.  
Car floor: Granite  
COP: Floor button, Intercom, Alarm

#### STEEL SHAFT

Shaft structure material: Powder coated steel  
Shaft structure material: Powder coated steel  
Shaft wall: Tempered glass (thickness: 8mm – 10mm)  
Landing door: Tempered glass (thickness: 10mm) + Brushed/Mirror stainless steel (thickness: 1mm)

#### SAFETY FACTORS

- Protection against antiphase, phase loss, overload, overspeed.
- UPS
- Photocell
- Governor

### SQUARE HOMELIFT WITH CONCRETE SHAFT

#### GENERAL

Rated load (min-max): 250kg – 450kg  
Speed: 0.3m/s – 0.45m/s  
Power supply: 1 phase 220V or 3 phases 380V  
Maximum travel: 20m  
Maximum stop: 5 stops  
Recommended Pit: 300mm  
Recommended OH: 3800mm  
Type of installation: Indoor/Outdoor  
Machine: Sicor (Italy)  
Controller: Arkel (Turkey)  
Rope: Rope Ø6.5mm - Rope Ø8mm

#### CAR

Car wall: Tempered glass (thickness: 10mm) + Brushed/ Mirror stainless steel (Car wall Tempered glass (thickness: 10mm) + Brushed/ Mirror stainless steel (thickness: 1mm)  
Car ceiling: Mirror stainless steel (thickness: 1mm)  
Led spotlights which will automatically turn off after 5 minutes if the elevator is not in operation.  
Car floor: Granite  
COP: Floor button, Intercom, Alarm

#### STEEL SHAFT

Shaft structure material: Powder coated steel  
Shaft structure material: Powder coated steel  
Shaft wall: Tempered glass (thickness: 8mm – 10mm)  
Landing door: Tempered glass (thickness: 10mm) + Brushed/Mirror stainless steel (thickness: 1mm)

#### SAFETY FACTORS

- Protection against antiphase, phase loss, overload, overspeed.
- UPS
- Photocell
- Governor

The image is a composite of two photographs. The left side shows a modern, multi-story building with white, curved balconies and decorative metal railings. The right side shows a glass-enclosed lift shaft with a glass door and a staircase. In the center, there is a large, stylized logo for 'PASSENGER LIFTS' with a red and green geometric design. The text 'PASSENGER LIFTS' is in white, bold, uppercase letters.

# PASSENGER LIFTS



#### CABIN

In linen-shiny scratchproof steel.  
Finishes in bright polished BA stainless steel.



#### LIGHTING

False ceiling perforated in rectangles



#### FLOOR

In grey Enoleum





#### CABIN

In plastic laminates, with finishes and horizontal steel slats in bright polished BA stainless steel.



#### LIGHTING

False ceiling featuring rectangular holes arranged in a pyramidal shape.



#### FLOOR

In Carrara white marble

# PASSENGER LIFTS

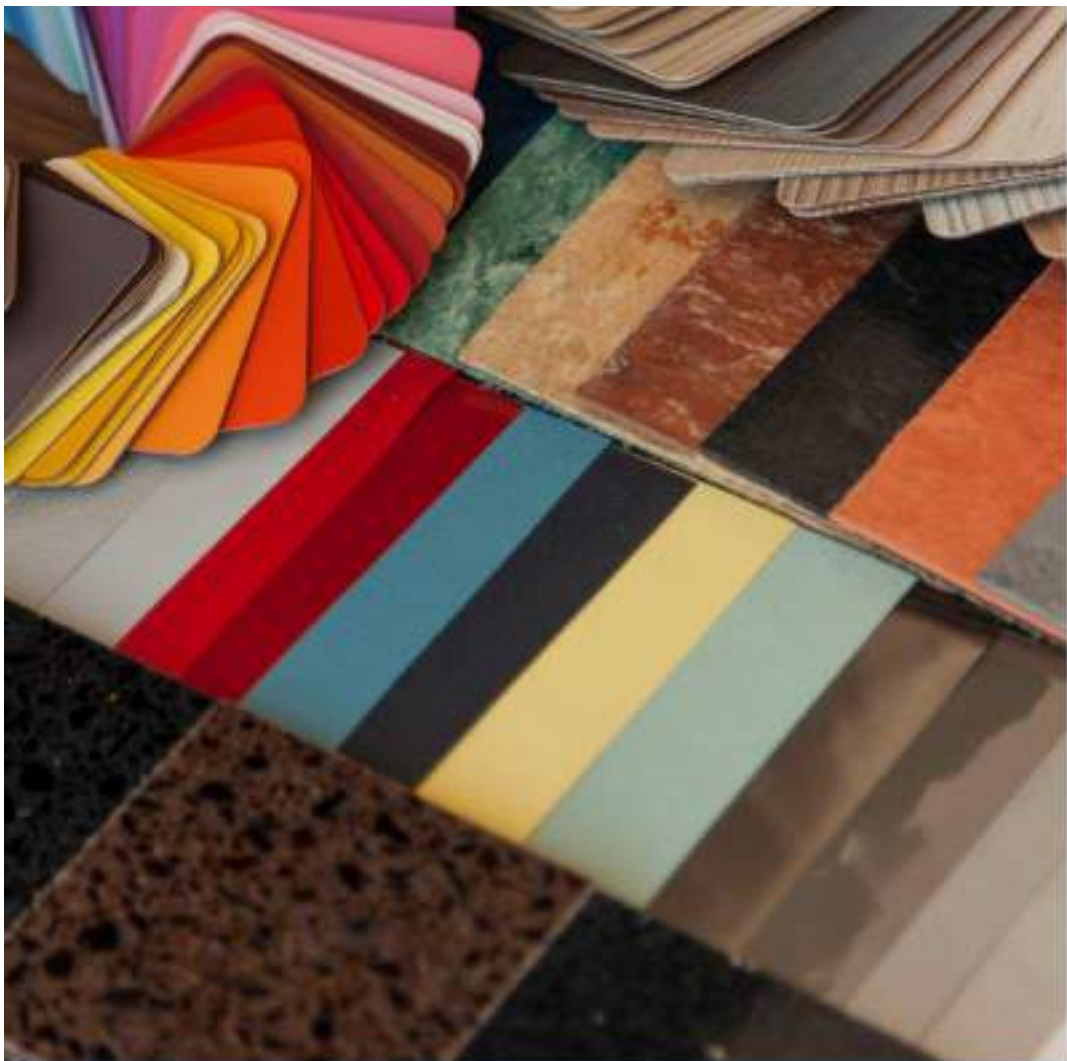
## Specifications

### Passenger lifts with the speed 1m/s

Load	300kg	450kg	630kg	800kg	1000kg
Traction machine	Sicor Italy SG10B	Sicor Italy SG15BF	Sicor Italy SG22BF	Sicor Italy SG10BF	Sicor Italy SG38BF
Sheave diameter	200mm*	240mm*	240mm*	240mm*	240mm*
Rope numbers x Rope diameter	4 x 8mm	5 x 8mm	6 x 8mm	7 x 8mm	9 x 8mm
Power	3.4kw	5.1kw	6kw	8.2kw	10.2kw
Speed	1m/s				
Min. Pit (mm)	1200				
Min. OH (mm)	4200-4400				
Shaft size (mm) (CWT at the back)	1600x1750	1800x1900	1800x1750	2100x1800	2100x2100
Shaft size (mm) (CWT at side)	1900x1200	2300x1350	2000x1700	2400x1700	2400x1950
Cabin size (mm) (Width x Depth x Height)	1200x750x2100	1400x900x2200	1400x1150x2200	1800x1200x2200	1800x1500x2200
Entrance	1 or perpendicular (special design)				
Door size (mm) (Width x Height)	700x2100	800x2100	800x2100	900x2100	900x2100
Operator and mechanism	Central opening				
Panel	Panels and frames are made of 304 Stainless Steel				
Handrail	According to the cabin design				
Mirror	According to the cabin design				
Illumination	Indirect				
Ceiling	According to the cabin design				
Floor	According to the cabin design				
Wall	According to the cabin design				
Controller	STEP controller AS389				
LOP	7 segment or matrix display, standard position				
COP	COP plate is made of Brushed Stainless steel 2mm thick, standard position				
Car frame	Centre car frame				
Car guide rail	300kg - 450kg T78-B 630kg - 1000kg T89-B				
Counterweight guide rail	350kg-450kg T50-A 630kg-1000kg T78-B				
Safety gear	Standard				
Governor	Standard				
Car damping pad and machine	Standard				
Flat cable	Standard				
Wire rope	Standard				
Other accessories	UPS, Arrived alarm, Alarm, Intercom, Emergency light, Priority service key switch, Photocell				

### Passenger lifts with the speed 1.5m/s

Load	450kg	630kg	800kg	1000kg
Traction machine	Sicor Italy SG15BF	Sicor Italy SG22BF	Sicor Italy SG30BF	Sicor Italy SG38BF
Sheave diameter	240mm*	240mm*	240mm*	240mm*
Rope numbers x Rope diameter	5 x 8mm	5 x 8mm	7x8mm	9 x 8mm
Power	6.5kw	7.7kw	10.5kw	13kw
Speed	1.5m/s			
Min. Pit (mm)	1200			
Min. OH (mm)	4200-4400			
Shaft size (mm) (CWT at the back)	1800x1500	1800x1750	2100x1800	2100x2100
Shaft size (mm) (CWT at side)	2100x1350	2000x1700	2400x1700	2400x1950
Cabin size (mm) (Width x Depth x Height)	1400x900x2200	1400x1150x2200	1600x1200x2200	1600x1500x2200
Entrance	1 or perpendicular (special design)			
Door size (mm) (Width x Height)	800x2100	800x2100	900x2100	900x2100
Operator and mechanism	Central opening			
Panel	Panels and frames are made of 304 Stainless Steel			
Handrail	According to the cabin design			
Mirror	According to the cabin design			
Illumination	Indirect			
Ceiling	According to the cabin design			
Floor	According to the cabin design			
Wall	According to the cabin design			
Controller	STEP controller AS389			
LOP	7 segment or matrix display, standard position			
COP	COP plate is made of Brushed Stainless steel 2mm thick, standard position			
Car frame	Centre car frame			
Car guide rail	300kg - 450kg T78-B 630kg - 1000kg T89-B			
Counterweight guide rail	300kg-450kg T50-A 630kg-1000kg T78-B			
Safety gear	Standard			
Governor	Standard			
Car damping pad and machine damping pad	Standard			
Flat cable	Standard			
Wire rope	Standard			
Other accessories	UPS, Arrived alarm, Alarm, Intercom, Emergency light, Priority service key switch, Photocell			



# CUSTOMIZATION

## WALL-CUSTOMIZATION

NORMAL



## PLASTIC LAMINATES

WOOD EFFECTS



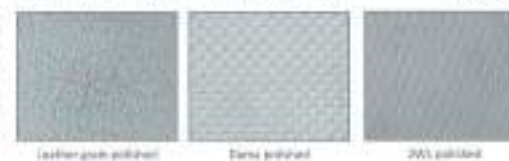
## STEEL RANGE

STANDARD STEEL



COLOURED STAINLESS STEEL

ANTI-SCRATCH STAINLESS STEEL



## TEMPERED GLASS



M16 white with ex glass backing with non slip surface texture.

## FLOOR-CUSTOMIZATION

### ROCK SOLID



807 Polar Ice    411 White    817 Sand Pearl    856 Black Star    2402 Dewy Fall

### STONE MATERIALS

MARBLE



Carrara White    Guatemala Green

GRANITE



Serenita White    Krasa    African Black

### GLASS



Milk white with ice glass  
floating with non-slip  
surface texture

### PVC



543 Ivory    488 Grey    8007 110 Silver Grey    3830 180 Mercury Grey    8820 100 Quartz Black

NON-SLIP  
PVC R10

## CEILING & FLOOR-CUSTOMIZATION

Ceiling and floor types in different colors and textures



HG KAHYE GRANIT C 1920    BEYAZ HUS C 1439    HG YESIL GRANIT C 1921    BAMBU C 1454



SATEN SIYAH C 1453    SIYAH GRANIT C 1843    ACIK GRANIT C 1841    AMERIKAN CEVIZ C 1461



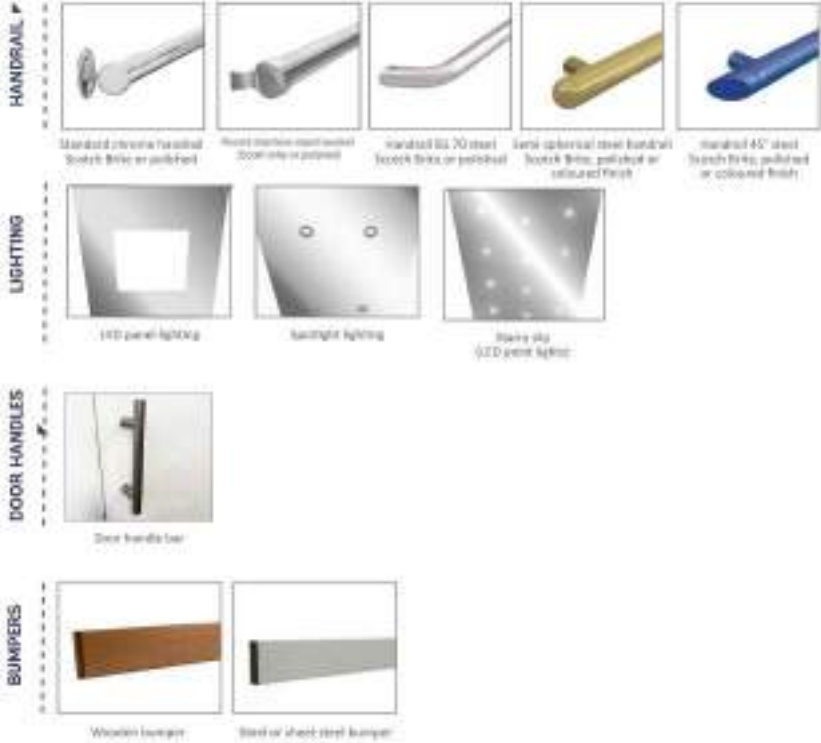
HG BEYAZ MERMER C 1918    HG SIYAH GRANIT C 1922    AKCA AGAC C 1452    ALMAN ANTRASIT C 1440



MAT AYTASI C 1428    YESIL KAYAC C 1831    BUTE GUMUS C 1427    NATUREL SILVER C 1479

BENELIFTS S.R.L

## ACCESSORIES



## COMPONENTS



**BENEFITS**  
YOUR BEST TEAM

# DOOR FRAME & DOOR PANEL

## DOOR-FRAMES AND AUTOMATIC DOOR PANEL

DOOR-PANEL: Telescopic door-panel  
Opposite door-panel  
Wooden-clad door-panel  
Folding door-panel with lever  
Class EI Fire Resistant Door-panel

MONORAIL DOOR FRAME



DOOR FRAME WITH DOOR SIDE RAIL



CLASS EI FIRE-RESISTANT DOOR FRAME



MONORAIL SLIDE DOOR



FOLDING DOOR FRAME (ALUMINIUM OR STEEL)



## DOOR-FRAMES AND MANUAL SWING DOORS

DOORS: • Wooden-clad or steel-clad doors  
• Armoured doors with European cylinder  
• Automatic doors  
• Class EI Fire Resistant Doors

\*Steel sheet powder-coating available in the RAL colour of the customer's choice.



WINDOWLESS DOOR\*



WINDOWED DOOR\*



PANORAMIC DOOR\*



WOODEN-CLAD DOOR



PANORAMIC DOOR IN NATURAL ANODIZED ALUMINIUM



FULL GLASS PANORAMIC DOOR WITH STEEL-CLAD DOOR-FRAME OF THE CUSTOMER'S CHOICE



Via Augusto Anfossi, 13 - 20135 Milano-MI, Italy.  
info@benelifts.com  
www.benelifts.com